



# FLIPPY FACES

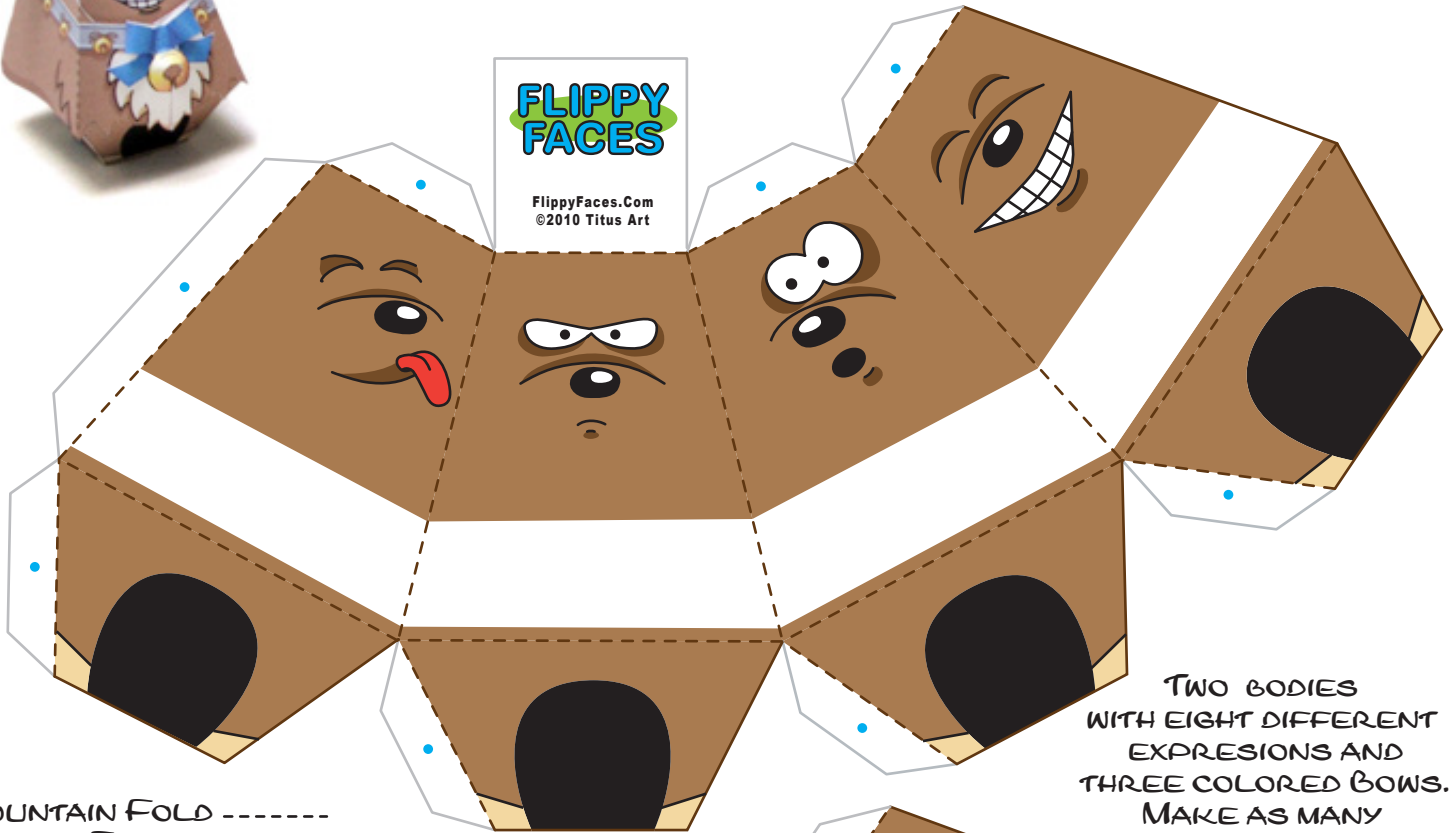
PAPER CRAFT TOY

# Rowdy Reindeer

Flippy Faces are paper craft toys with changeable moods. Lift the Head and turn the Body to flip faces. Show your mood with your flippy friends. Have fun!

FLIPPY FACES

FlippyFaces.Com  
©2010 Titus Art

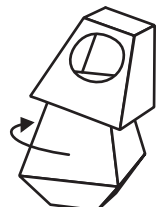
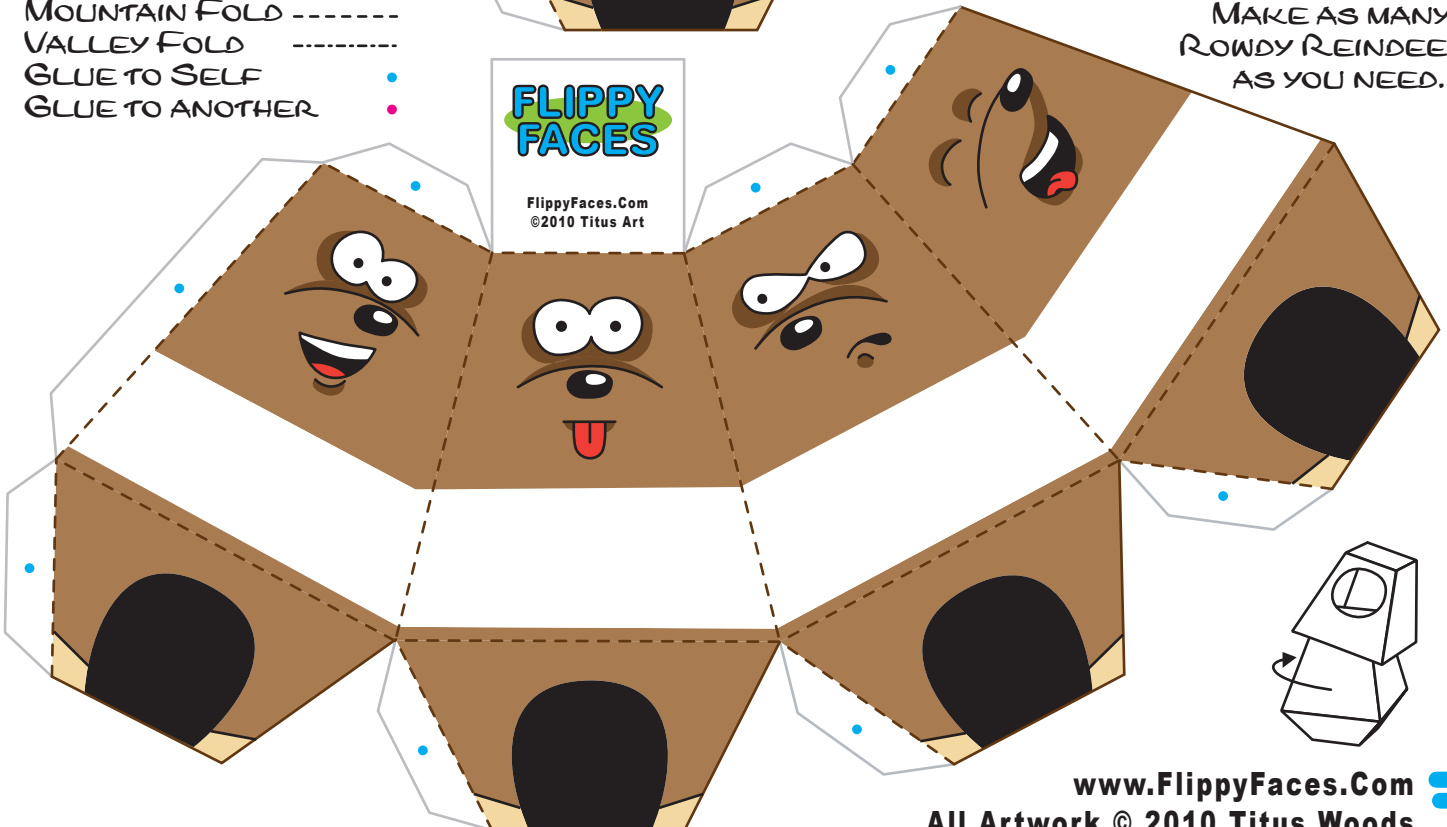


TWO BODIES WITH EIGHT DIFFERENT EXPRESSIONS AND THREE COLORED BOWS. MAKE AS MANY ROWDY REINDEERS AS YOU NEED.

MOUNTAIN FOLD -----  
VALLEY FOLD -----  
GLUE TO SELF ●  
GLUE TO ANOTHER ●

FLIPPY FACES

FlippyFaces.Com  
©2010 Titus Art



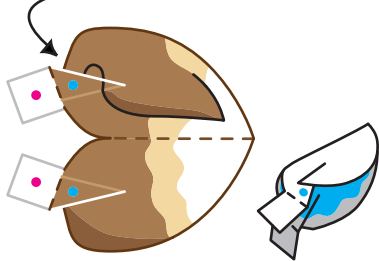
# FLIPPY FACES

PAPER CRAFT TOY

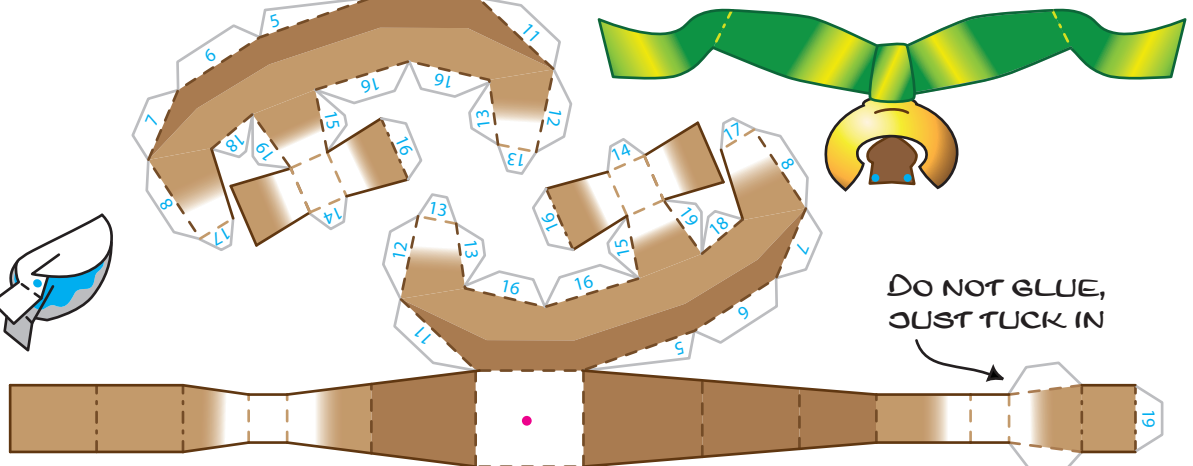
## Rowdy Reindeer

FOLLOW THE NUMBERS ON THE ANTLER TABS FOR EASIER CONSTRUCTION.

(1) GLUE AND OVERLAP TO CLIP THE INSIDE EAR

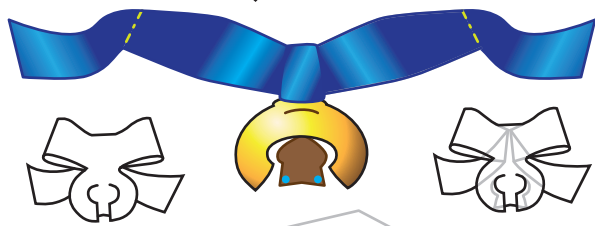


(2) GLUE THE BACK OF THE EAR USING FLAP



DO NOT GLUE, JUST TUCK IN

GLUE FLAPS INSIDE HEAD, NOT TOGETHER



TAIL